



COMMUNIQUE

A Semi-Annual T A E L Newsletter

Meeting Challenges, Delivering Value

Chicago

2010

Volume 7, Issue 1

Detroit

Philadelphia

Prestigious Commission



View From Southeast

T A E L has been commissioned by the University of Illinois at Chicago (UIC) to design the adaptive reuse of Douglas Hall to house the new UIC College of Business Administration (CBA). Construction began in June, 2010, and completion is expected in Summer, 2011.

A three story, 24,000 square foot reinforced concrete structure, Douglas Hall is part of a three-building cluster on the East campus of UIC. The renovation of this facility entails the gutting of the entire structure and removal of the precast concrete and glass envelope, as well as the roof. The completed project will accommodate administrative and other support functions on the first floor, with materials and finishes that reflect a corporate business environment.

The second and third floors will house 75-person lecture rooms, 48-person classrooms, hubs, meeting rooms and other spaces that complement CBA's program requirements. Finishes for these floors will be more conducive to both formal and informal learning environments.

The facility will feature state-of-the-art technology that facilitates long-distance learning and supports its featured trading room. This project is targeted to achieve "LEED Silver" Certification. To-date, Douglas Hall is projected to surpass this goal.



Main Lobby

IN THIS ISSUE

Prestigious Commission.....1

SDP - Facility Condition Assessment.....2

School District of Philadelphia - Facility Condition Assessment

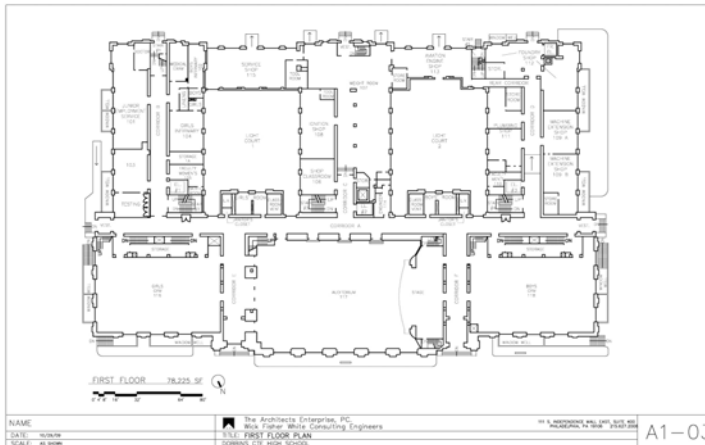


Northeast Entrance

The School District of Philadelphia commissioned TAEI to conduct a comprehensive facility condition assessment of the Dobbins CTE High School, an 8-story, 330,000 s.f. facility. The purpose of the assessment was to prepare a program for the complete exterior restoration of the facility, along with new interior general and ADA upgrades.

TAEI personnel responded to the compressed schedule and completed the total assessment of this facility in the allotted time. After compiling detailed data on the conditions of each room, TAEI generated statements of probable cost for rectification of deficiencies.

To complement the requirements of the high school, TAEI generated a preliminary program for a 27,550 s.f. Gymnasium Addition, complete with support functions, and along with a statement of probable cost.



First Floor

SCHOOL DISTRICT OF PHILADELPHIA			
FACILITY ASSESSMENT SUMMARY			
MURRELL DOBBINS C.T.E. HIGH SCHOOL			
School Name	Murrell Dobbins CTE High School	Assessment Date	9/2/2009 - 10/27/2009
Address	2150 W. Lehigh Avenue Philadelphia, PA 19132	Principal	Charles Whiting
Phone	215.227.4421	Principal's Phone	215.227.4421
Fax	215.227.4944	Asst. Principal(s)	Cortez Faison, Robert Field
Location #	406	Building Engineer	Charles Holmes
		Engineer's Phone	215.227.4421
HAZARDS			
Issue			
Disposition			
FACILITY PROFILE			
Original Building	Yes	Addition	<input type="checkbox"/>
Year of Construction	1936	No. of Floors	8
Historic Potential		Basement	Yes <input checked="" type="checkbox"/> No <input type="checkbox"/>
Construction Type (Envelope)	Masonry	G.S.F. (Excl. Bsmt.)	330,560 S.F.
Structural System	Concrete / Steel (Composite)	No. of Classrooms	
ENROLLMENT			
Grades Served	9th - 12th	Current Enrollment	950
Students/Classroom (Avg.)		Projected Enrollment	
Remarks		School Capacity	1,500
RECENT PROJECTS			
Year		Year	
Scope		Scope	
SUMMARY			
Program	Code	Priority	Total costs
Site Improvements	01		\$627,147
Building Envelope	02		\$7,776,381
Building Interiors	03		\$17,407,091
Mechanical Systems	04		\$6,041,760
Plumbing Systems	05		\$3,728,625
Fire Protection Systems	06		\$2,805,750
Electrical & IT Systems	07		\$5,227,708
Security & Life Safety, FA	08		\$401,605
Handicapped Accessibility-ADA	09		\$164,865
Code Analysis	10		\$990,800
TOTAL COSTS			\$45,171,732

Note: Total Costs include general conditions, contractor's fee, design contingency, construction contingency and consultant's fees.

